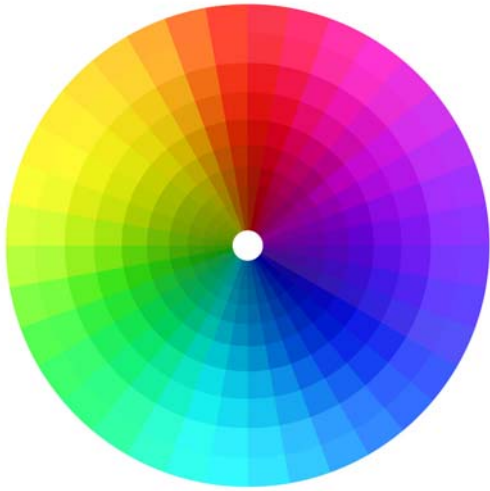


# Simplify your palette

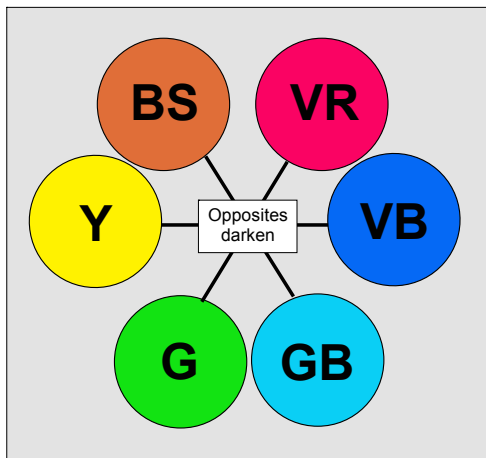




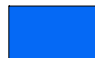
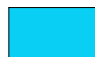


You can create most any spectrum color with a simple six-color palette. And, an infinity of tones and shades you'll make by mixing grays and black with your colors... plus color tints when you add white (the seventh 'color').
















Use these **six basic colors** to mix acrylics and oils predictably. Example: G + GB will yield bright pure greens, VR + VB makes pure violets, Y + VR reds and oranges, and Y + BS for a range of yellow-browns, like yellow ochre and raw sienna.

To get natural grays for tones, mix opposites -- like Y + VB, and G + VR. For shades, BS + VB for near-black.

\* **Plus:** Titanium White, for tints and pure white highlights.

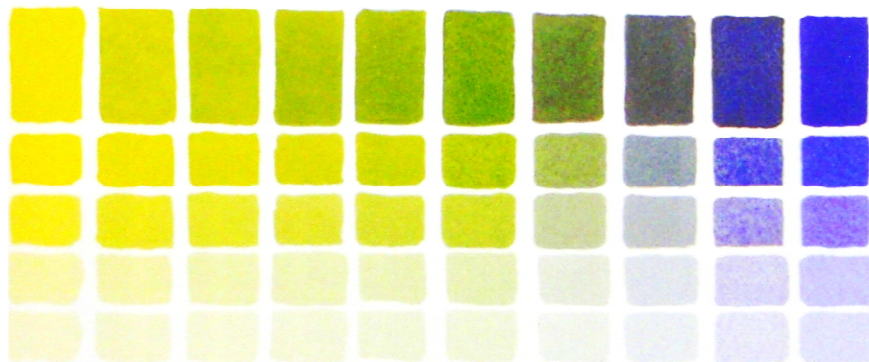
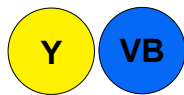
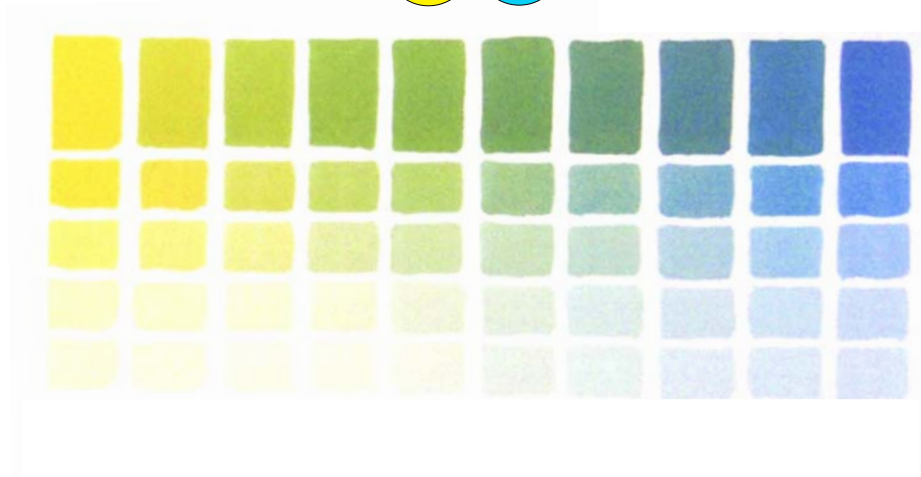
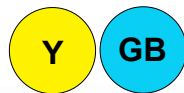
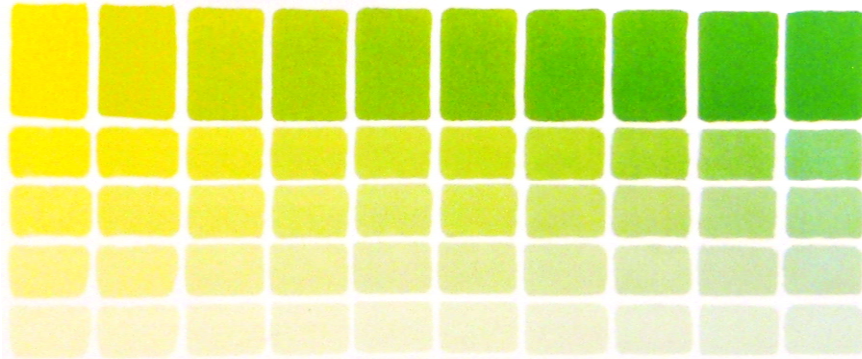
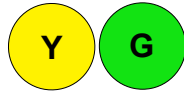


-  BS Brown Burnt Sienna
-  VR Violet-Red Quinacridone Red
-  VB Violet-Blue Ultramarine Blue
-  GB Green-Blue Primary Cyan
-  G Green Phthalocyanine Green
-  Y Yellow Primary Yellow

-  +  =  Burnt Sienna plus Ultramarine Blue makes a near Black.
-  +  =  Burnt Sienna plus Primary Cyan makes Burnt Umber.
-  +  =  Burnt Sienna plus Primary Yellow makes Yellow Ochre.
-  +  =  Burnt Sienna plus Primary Yellow makes Terre Verte.
-  +  =  Burnt Sienna plus Quin. Red makes Sinope.

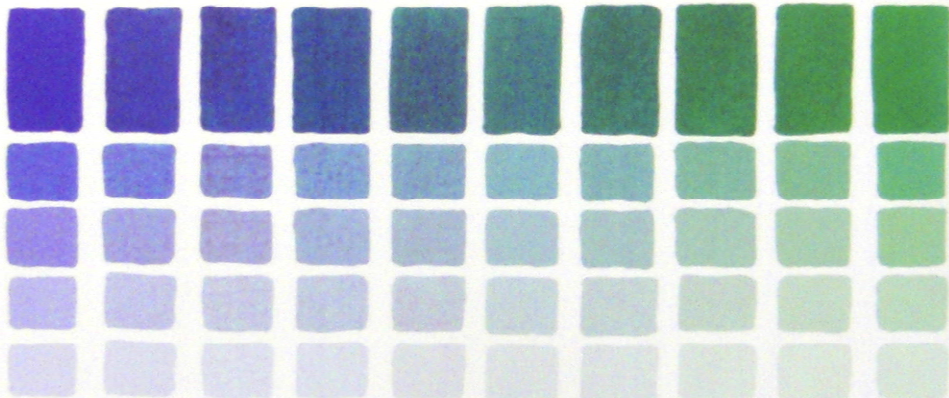
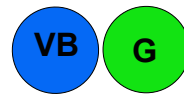
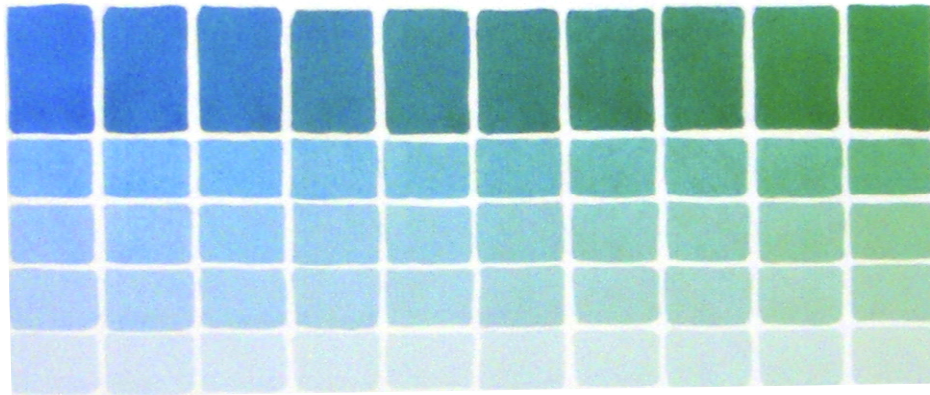
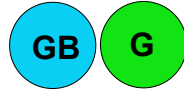
Note: PDF screen colors or printer colors are very different than paint colors. Make your own color chart with paints for accuracy.

# Greens



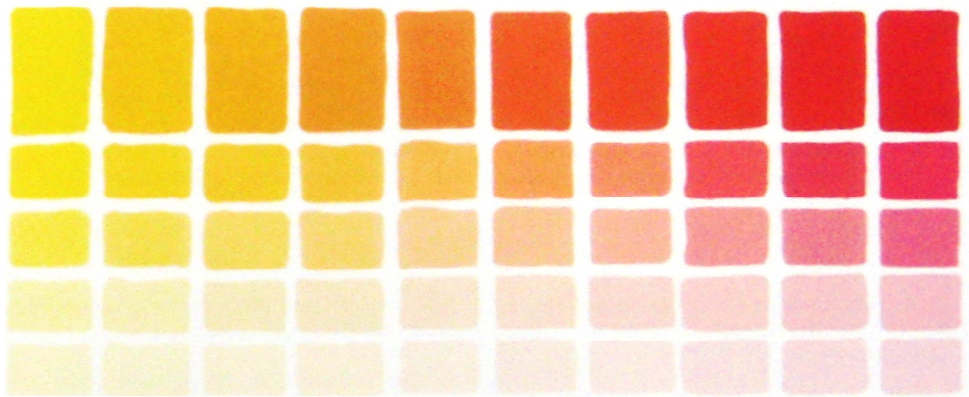
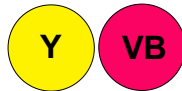
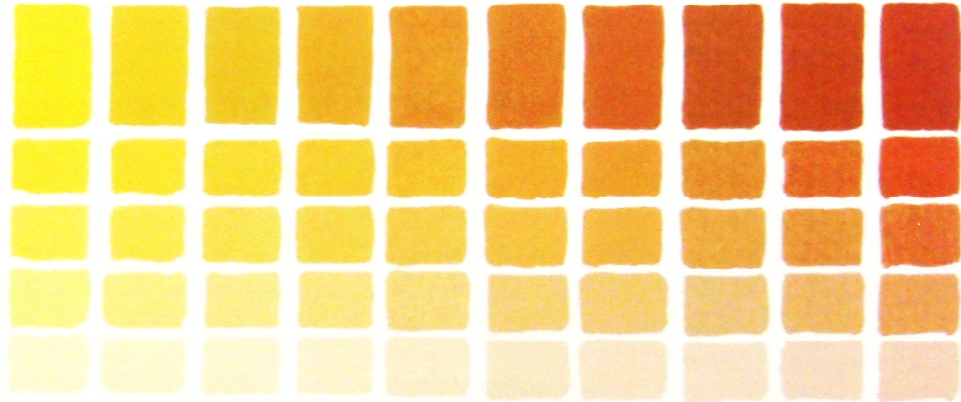
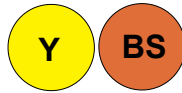
Note: PDF screen colors or printer colors are very different than paint colors. Make your own color wheel with paints for accuracy.

# Greens 2



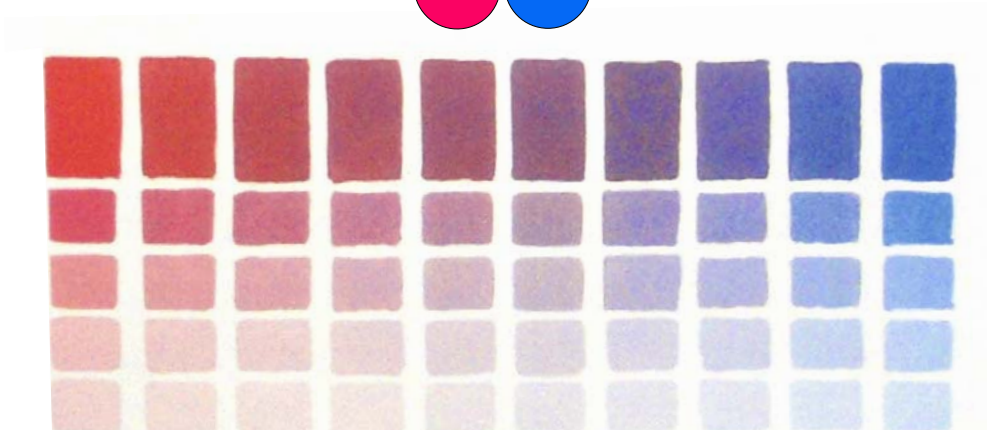
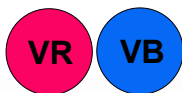
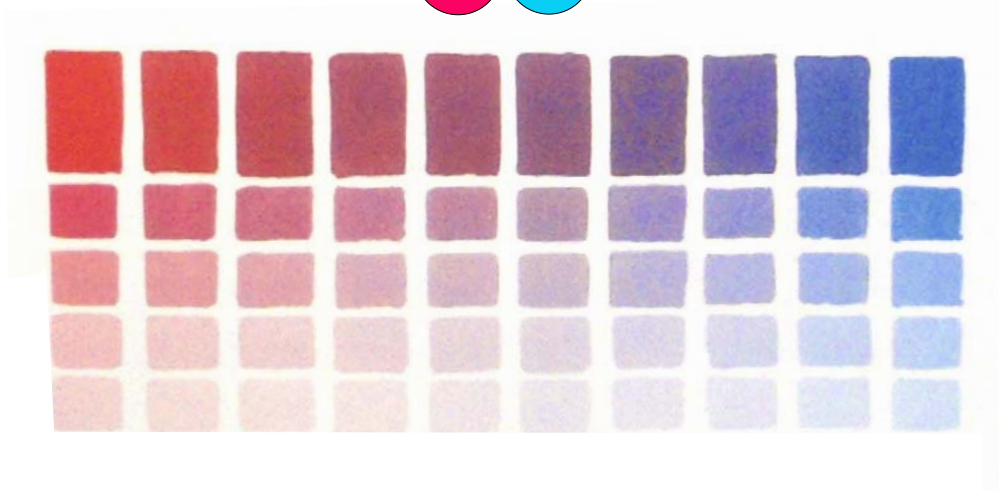
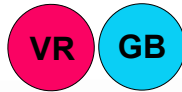
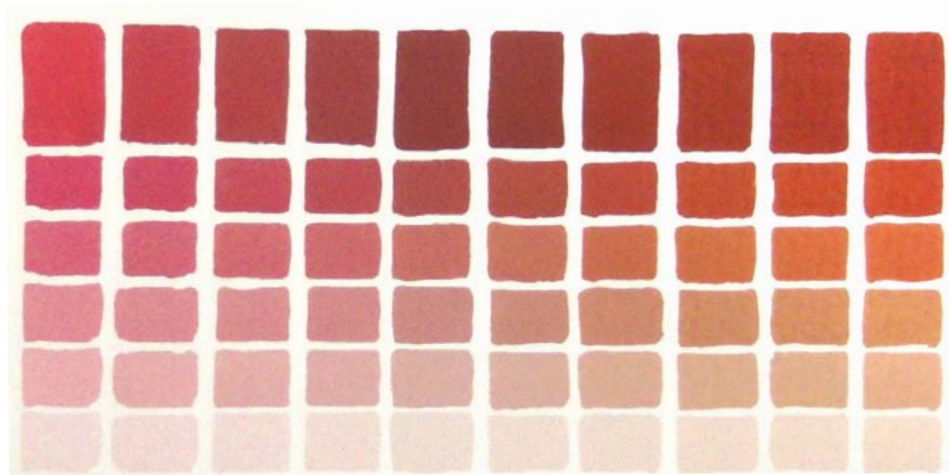
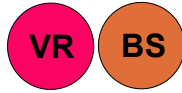
Note: PDF screen colors or printer colors are very different than paint colors. Make your own color chart with paints for accuracy.

# Yellows



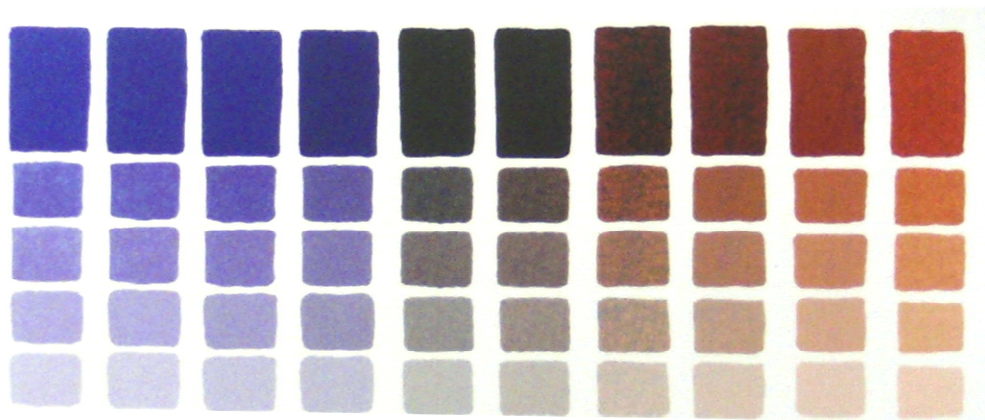
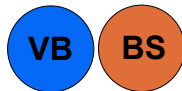
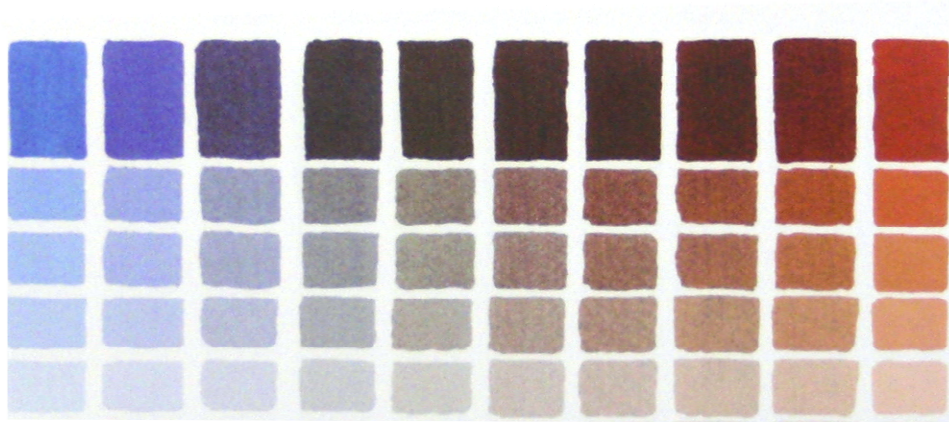
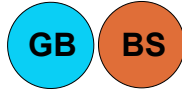
Note: PDF screen colors or printer colors are very different than paint colors. Make your own color chart with paints for accuracy.

# Violets

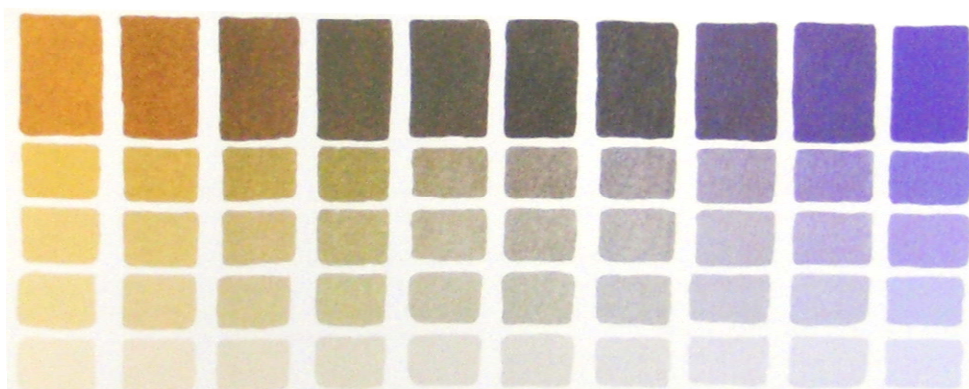
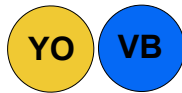


Note: PDF screen colors or printer colors are very different than paint colors. Make your own color chart with paints for accuracy.

# Browns



yellow ochre



Note: PDF screen colors or printer colors are very different than paint colors. Make your own color chart with paints for accuracy.

# Tints, tones, shades

Tints: add white    Tones: add gray    Shades: add black

**VB**



**GB**



**G**



**Y**



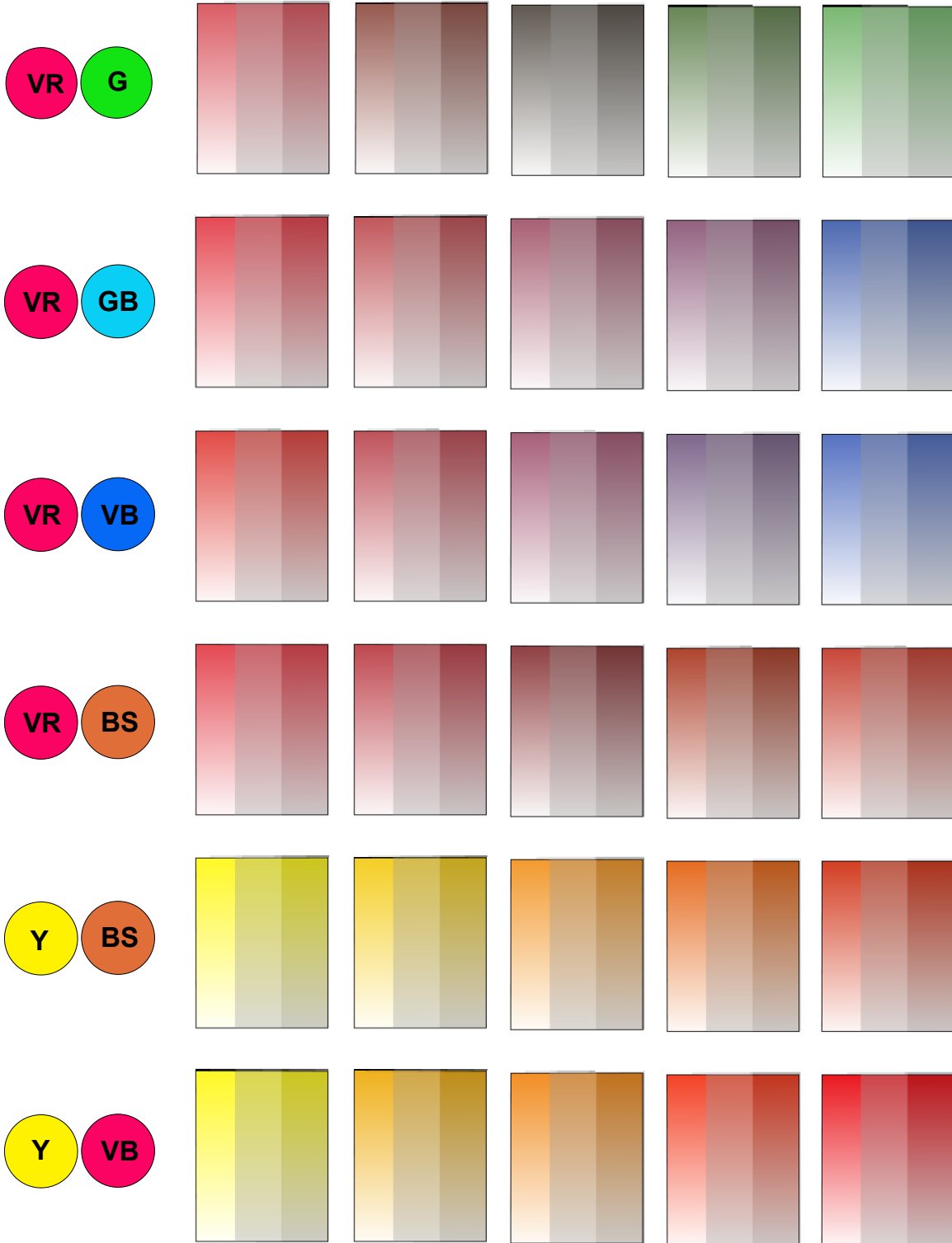
**VR**



**BS**



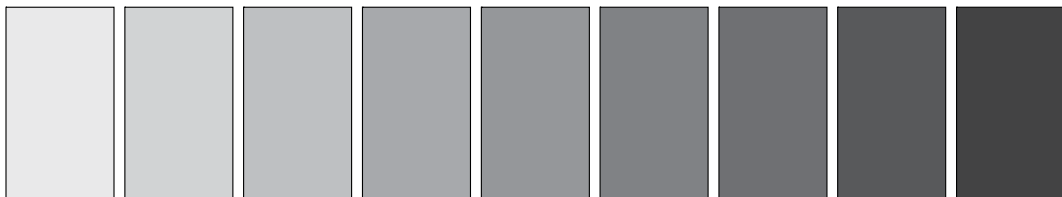
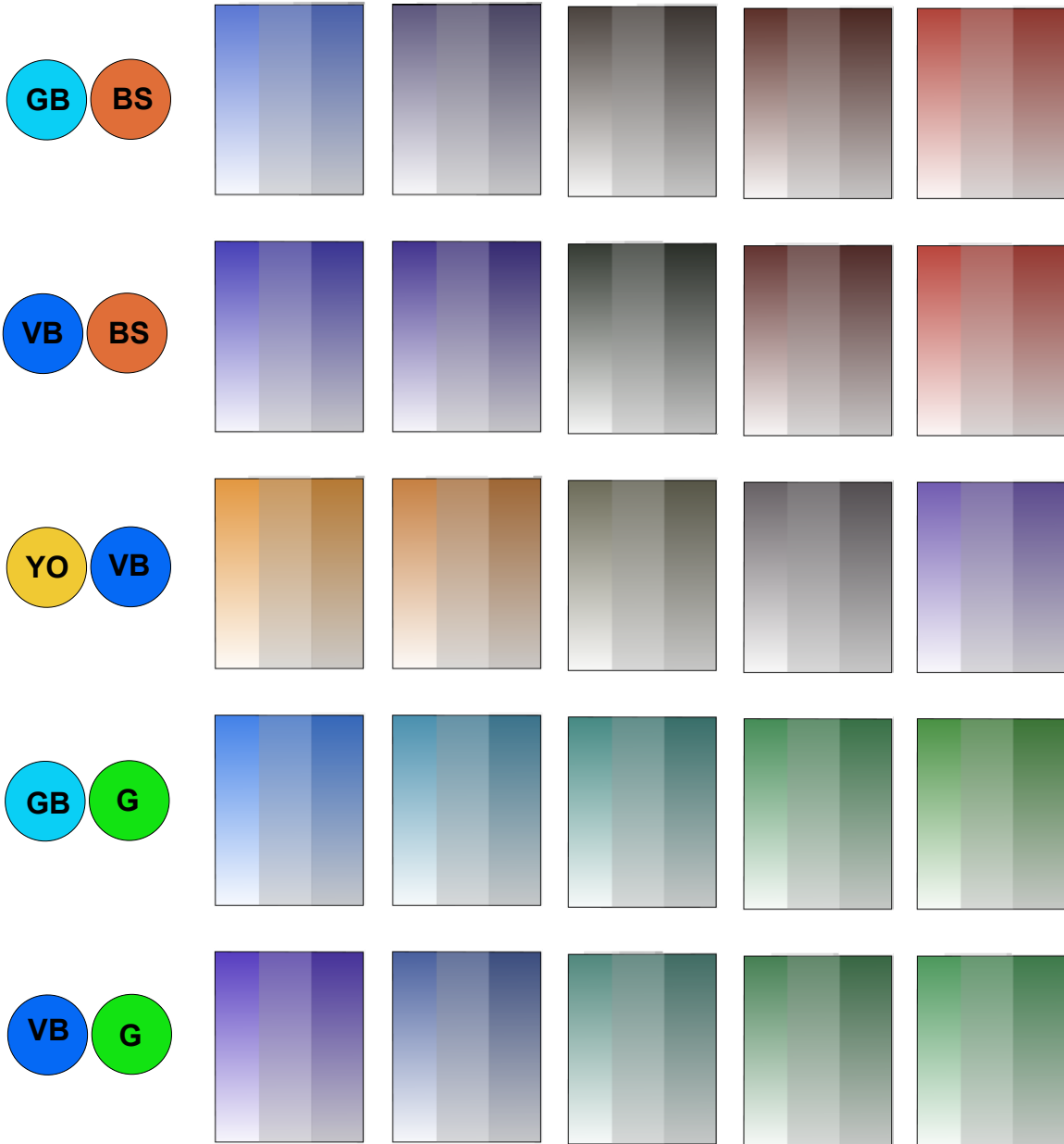
# Tints, tones, shades



Note: PDF screen colors or printer colors are very different than paint colors. Make your own color chart with paints for accuracy.



# Tints, tones, shades



Note: PDF screen colors or printer colors are very different than paint colors. Make your own color chart with paints for accuracy.

# Hue > Value > Chroma

In 1905, Alfred Munsell published *Color Notation*, based on --

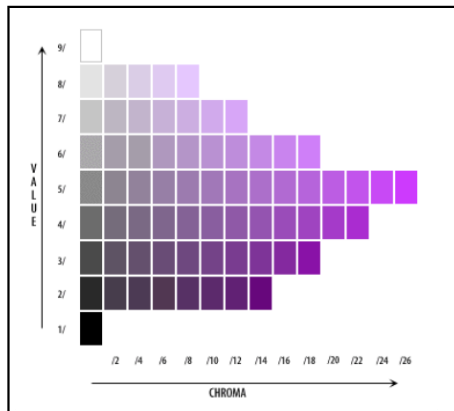
**Hue** "the quality by which we distinguish one color from another." Munsell selected five main colors: red, yellow, green, blue, and purple; and five intermediate colors: yellow-red, green-yellow, blue-green, purple-blue, and red-purple.

**Value** "the quality by which we distinguish a light color from a dark one." Value refers to the grey level of the color. This ranges from white to black.

**Chroma** "the quality that distinguishes the difference from a pure hue to a grey shade."

The Munsell colorimetry system is complex. For more information, see <http://en.wikipedia.org/wiki/Munsell>.

For artists, the color swatches at right and on the following pages may be more useful. They follow the same hue - value - chroma model, but are labelled with convenient color names to allow sharing with others via PDF or hardcopy.



Red, hue 0°

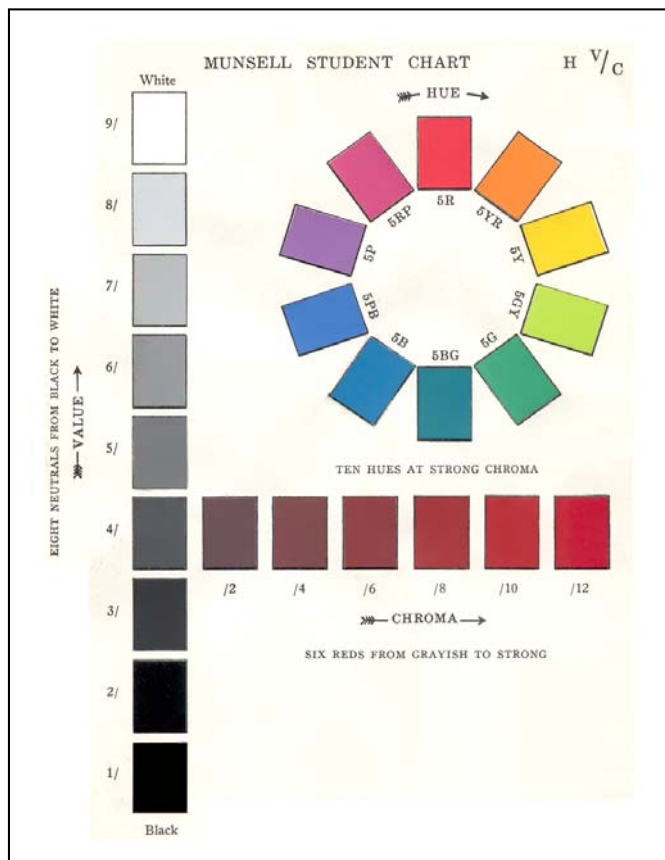
1 Pinkish white	2 Very pale pink	3 Pale pink	4 Light pink	5 Light brilliant red	6 Luminous vivid red
7 Pinkish gray	8 Pale, grayish pink	9 Pink	10 Brilliant red	11 Vivid red	
12 Reddish gray	13 Grayish red	14 Moderate red	15 Strong red		
16 Reddish brownish gray	17 Dark grayish reddish brown	18 Reddish brown	19 Deep reddish brown		
20 Reddish brownish black	21 Very reddish brown	22 Very deep reddish brown			

Orange red, hue 15°

23 Very pale orange red	24 Pale orange red	25 Very light orange red	26 Light brilliant orange red	27 Luminous vivid orange red
28 Pale, light grayish brown red	29 Light orange red	30 Brilliant orange red	31 Vivid orange red	
32 Grayish brown red	33 Moderate orange red	34 Strong orange red		
35 Dark grayish brown red	36 Brown red	37 Deep brown red		

Orange, hue 30°

38 Orangeish white	39 Very pale orange	40 Pale orange	41 Very light orange	42 Light brilliant orange	43 Luminous vivid orange
44 Light brownish gray	45 Pale, light grayish brown	46 Light orange	47 Brilliant orange	48 Vivid orange	
49 Brownish gray	50 Grayish brown	51 Moderate orange	52 Strong orange		
53 Dark brownish gray	54 Dark grayish brown	55 Brown	56 Deep brown		



Orange amber, hue 37.5°

57 Very pale orange amber	58 Pale orange amber	59 Very light orange amber	60 Light brilliant orange amber	61 Luminous vivid orange amber
62 Pale, light grayish brown amber	63 Light orange amber	64 Brilliant orange amber	65 Vivid orange amber	
66 Grayish brown amber	67 Moderate orange amber	68 Strong orange amber		
69 Dark grayish brown amber	70 Brown amber	71 Deep brown amber		

Amber, hue 45°

72 Very pale amber	73 Pale amber	74 Very light amber	75 Light brilliant amber	76 Luminous vivid amber
77 Pale, light grayish amber	78 Light amber	79 Brilliant amber	80 Vivid amber	
81 Grayish amber	82 Moderate amber	83 Strong amber		
84 Dark grayish amber	85 Dark amber	86 Deep amber		

Amber yellow, hue 52.5°

87 Very pale amber yellow	88 Pale amber yellow	89 Very light amber yellow	90 Light brilliant amber yellow	91 Luminous vivid amber yellow
92 Pale, light grayish amber yellow	93 Light amber yellow	94 Brilliant amber yellow	95 Vivid amber yellow	
96 Grayish amber yellow	97 Moderate amber yellow	98 Strong amber yellow		
99 Dark grayish amber yellow	100 Dark amber yellow	101 Deep amber yellow		

Yellow, hue 60°

102 Yellowish white	103 Very pale yellow	104 Pale yellow	105 Very light yellow	106 Light brilliant yellow	107 Luminous vivid yellow
108 Light yellowish gray	109 Pale, light grayish olive	110 Light yellow	111 Brilliant yellow	112 Vivid yellow	
113 Yellowish gray	114 Grayish olive	115 Moderate olive	116 Strong olive		
117 Dark olivish gray	118 Dark grayish olive	119 Dark olive	120 Deep olive		
121 Yellowish black	122 Very dark olive	123 Very deep olive			

Yellow lime, hue 67.5°

124 Very pale yellow lime	125 Pale yellow lime	126 Very light yellow lime	127 Light brilliant yellow lime	128 Luminous vivid yellow lime
129 Pale, light grayish olive lime	130 Light yellow lime	131 Brilliant yellow lime	132 Vivid yellow lime	
133 Grayish olive lime	134 Moderate olive lime	135 Strong olive lime		
136 Dark grayish olive lime	137 Dark olive lime	138 Deep olive lime		

Lime, hue 75°

139 Very pale lime	140 Pale lime	141 Very light lime	142 Light brilliant lime	143 Luminous vivid lime
144 Pale, light grayish lime	145 Light lime	146 Brilliant lime	147 Vivid lime	
148 Grayish lime	149 Moderate lime	150 Strong lime		
151 Dark grayish lime	152 Dark lime	153 Deep lime		

Chartreuse green, hue 90°

154 Chartreuse greenish white	155 Very pale chartreuse green	156 Pale chartreuse green	157 Very light chartreuse green	158 Light brilliant chartreuse green	159 Luminous vivid chartreuse green
160 Light chartreuse greenish gray	161 Pale, light grayish chartreuse green	162 Light chartreuse green	163 Brilliant chartreuse green	164 Vivid chartreuse green	
165 Chartreuse greenish gray	166 Grayish chartreuse green	167 Moderate chartreuse green	168 Strong chartreuse green		
169 Dark chartreuse greenish gray	170 Dark grayish chartreuse green	171 Dark chartreuse green	172 Deep chartreuse green		

Sap green, hue 105°

173 Very pale sap green	174 Pale sap green	175 Very light sap green	176 Light brilliant sap green	177 Luminous vivid sap green
178 Pale, light grayish sap green	179 Light sap green	180 Brilliant sap green	181 Vivid sap green	
182 Grayish sap green	183 Moderate sap green	184 Strong sap green		
185 Dark grayish sap green	186 Dark sap green	187 Deep sap green		

Green, hue 120°

188 Greenish white	189 Very pale green	190 Pale green	191 Very light green	192 Light brilliant green	193 Luminous vivid green
194 Light greenish gray	195 Pale, light grayish green	196 Light green	197 Brilliant green	198 Vivid green	
199 Greenish gray	200 Grayish green	201 Moderate green	202 Strong green		
203 Dark greenish gray	204 Dark grayish green	205 Dark green	206 Deep green		
207 Greenish black	208 Very dark green	209 Very deep green			

Bluish green, hue 135°

210 Very pale bluish green	211 Pale bluish green	212 Very light bluish green	213 Light brilliant bluish green	214 Luminous vivid bluish green
215 Pale, light grayish bluish green	216 Light bluish green	217 Brilliant bluish green	218 Vivid bluish green	
219 Grayish bluish green	220 Moderate bluish green	221 Strong bluish green		
222 Dark grayish bluish green	223 Dark bluish green	224 Deep bluish green		

Spring green, hue 150°

225 Spring greenish white	226 Very pale spring green	227 Pale spring green	228 Very light spring green	229 Light brilliant spring green	230 Luminous vivid spring green
231 Light spring greenish gray	232 Pale, light grayish spring green	233 Light spring green	234 Brilliant spring green	235 Vivid spring green	
236 Spring greenish gray	237 Grayish spring green	238 Moderate spring green	239 Strong spring green		
240 Dark spring greenish gray	241 Dark grayish spring green	242 Dark spring green	243 Deep spring green		

Turquoise, hue 165°

244 Very pale turquoise	245 Pale turquoise	246 Very light turquoise	247 Light brilliant turquoise	248 Luminous vivid turquoise
249 Pale, light grayish turquoise	250 Light turquoise	251 Brilliant turquoise	252 Vivid turquoise	
253 Grayish turquoise	254 Moderate turquoise	255 Strong turquoise		
256 Dark grayish turquoise	257 Dark turquoise	258 Deep turquoise		

▼ Cyan, hue 180°

259 Cyanish white	260 Very pale cyan	261 Pale cyan	262 Very light cyan	263 Light brilliant cyan	264 Luminous vivid cyan
265 Light cyanish gray	266 Pale, light grayish cyan	267 Light cyan	268 Brilliant cyan	269 Vivid cyan	
270 Cyanish gray	271 Grayish cyan	272 Moderate cyan	273 Strong cyan		
274 Dark cyanish gray	275 Dark grayish cyan	276 Dark cyan	277 Deep cyan		
278 Cyanish black	279 Very dark cyan	280 Very deep cyan			

▼ Bluish cyan, hue 195°

281 Very pale bluish cyan	282 Pale bluish cyan	283 Very light bluish cyan	284 Light brilliant bluish cyan	285 Luminous vivid bluish cyan
286 Pale, light grayish bluish cyan	287 Light bluish cyan	288 Brilliant bluish cyan	289 Vivid bluish cyan	
290 Grayish bluish cyan	291 Moderate bluish cyan	292 Strong bluish cyan		
293 Dark grayish bluish cyan	294 Dark bluish cyan	295 Deep bluish cyan		

▼ Azure, hue 210°

296 Azureish white	297 Very pale azure	298 Pale azure	299 Very light azure	300 Light brilliant azure	301 Luminous vivid azure
302 Light azureish gray	303 Pale, light grayish azure	304 Light azure	305 Brilliant azure	306 Vivid azure	
307 Azureish gray	308 Grayish azure	309 Moderate azure	310 Strong azure		
311 Dark azureish gray	312 Dark grayish azure	313 Dark azure	314 Deep azure		

▼ Greenish blue, hue 225°

315 Very pale greenish blue	316 Pale greenish blue	317 Very light greenish blue	318 Light brilliant greenish blue	319 Luminous vivid greenish blue
320 Pale, light grayish greenish blue	321 Light greenish blue	322 Brilliant greenish blue	323 Vivid greenish blue	
324 Grayish greenish blue	325 Moderate greenish blue	326 Strong greenish blue		
327 Dark grayish greenish blue	328 Dark greenish blue	329 Deep greenish blue		

▼ Blue, hue 240°

330 Bluish white	331 Very pale blue	332 Pale blue	333 Very light blue	334 Light brilliant blue	335 Luminous vivid blue
336 Light bluish gray	337 Pale, light grayish blue	338 Light blue	339 Brilliant blue	340 Vivid blue	
341 Bluish gray	342 Grayish blue	343 Moderate blue	344 Strong blue		
345 Dark bluish gray	346 Dark grayish blue	347 Dark blue	348 Deep blue		
349 Bluish black	350 Very dark blue	351 Very deep blue			

▼ Indigo, hue 255°

352 Very pale indigo	353 Pale indigo	354 Very light indigo	355 Light brilliant indigo	356 Luminous vivid indigo
357 Pale, light grayish indigo	358 Light indigo	359 Brilliant indigo	360 Vivid indigo	
361 Grayish indigo	362 Moderate indigo	363 Strong indigo		
364 Dark grayish indigo	365 Dark indigo	366 Deep indigo		

**Violet, hue 270°**

367 Violetish white	368 Very pale violet	369 Pale violet	370 Very light violet	371 Light brilliant violet	372 Luminous vivid violet
373 Light violetish gray	374 Pale, light grayish violet	375 Light violet	376 Brilliant violet	377 Vivid violet	
378 Violetish gray	379 Grayish violet	380 Moderate violet	381 Strong violet		
382 Dark violetish gray	383 Dark grayish violet	384 Dark violet	385 Deep violet		

**Purple, hue 285°**

386 Very pale purple	387 Pale purple	388 Very light purple	389 Light brilliant purple	390 Luminous vivid purple
391 Pale, light grayish purple	392 Light purple	393 Brilliant purple	394 Vivid purple	
395 Grayish purple	396 Moderate purple	397 Strong purple		
398 Dark grayish purple	399 Dark purple	400 Deep purple		

**Magenta, hue 300°**

401 Magentaish white	402 Very pale magenta	403 Pale magenta	404 Very light magenta	405 Light brilliant magenta	406 Luminous vivid magenta
407 Light magentaish gray	408 Pale, light grayish magenta	409 Light magenta	410 Brilliant magenta	411 Vivid magenta	
412 Magentaish gray	413 Grayish magenta	414 Moderate magenta	415 Strong magenta		
416 Dark magentaish gray	417 Dark grayish magenta	418 Dark magenta	419 Deep magenta		
420 Magentaish black	421 Very dark magenta	422 Very deep magenta			

**Fuchsia, hue 315°**

423 Very pale fuchsia	424 Pale fuchsia	425 Very light fuchsia	426 Light brilliant fuchsia	427 Luminous vivid fuchsia
428 Pale, light grayish fuchsia	429 Light fuchsia	430 Brilliant fuchsia	431 Vivid fuchsia	
432 Grayish fuchsia	433 Moderate fuchsia	434 Strong fuchsia		
435 Dark grayish fuchsia	436 Dark fuchsia	437 Deep fuchsia		

**Rose, hue 330°**

438 Roseish white	439 Very pale rose	440 Pale rose	441 Very light rose	442 Light brilliant rose	443 Luminous vivid rose
444 Light roseish gray	445 Pale, light grayish rose	446 Light rose	447 Brilliant rose	448 Vivid rose	
449 Roseish gray	450 Grayish rose	451 Moderate rose	452 Strong rose		
453 Dark roseish gray	454 Dark grayish rose	455 Dark rose	456 Deep rose		

**Crimson, hue 345°**

457 Very pale crimson	458 Pale crimson	459 Very light crimson	460 Light brilliant crimson	461 Luminous vivid crimson
462 Pale, light grayish crimson	463 Light crimson	464 Brilliant crimson	465 Vivid crimson	
466 Grayish crimson	467 Moderate crimson	468 Strong crimson		
469 Dark grayish crimson	470 Dark crimson	471 Deep crimson		